



INSPIRE

**St John's Church
Ranmoor, Sheffield**

**April
2023**

£1.00



Holy Week

Passion Sunday 26th March
Palm Sunday 2nd April

Tuesday 4th April
Wednesday 5th April

Maundy Thursday 6th April

Good Friday 7th April
Easter Eve 8th April

Easter Day 9th April

6.30pm Membra Jesu Nostri
10.30am All Age Communion with
the reading of the Passion
6.30pm Evensong
8pm Holy Week Reflection & Compline
11.30am Holy Communion (RPC)
8pm Holy Week Reflection & Compline
7.30pm Holy Communion with
Foot washing
12-3pm Good Friday Service
2-4pm Easter Garden & Messy Church
8pm Lighting of the Easter Fire & vigil
10.30am Holy Communion

St John's, Church
Ranmoor

www.stjohnsranmoor.org.uk

Join us In Church, Facebook or
YouTube for our services
0114 230 1199

St John's Church, Ranmoor

Maundy Thursday

Thursday 6th April

7.30pm

Holy Communion
with foot washing

In Church & Facebook Live
www.stjohnsranmoor.org.uk



St John's Church

Ranmoor, Sheffield

Parish Office, Ranmoor Parish Centre,
5 Ranmoor Park Road, Sheffield, S10 3GX

Tel: 0114 230 1199

Website: www.stjohnsranmoor.org.uk

St John's Church is a community whose vocation is to extend to all people the same welcome that we ourselves have received from God in Christ. Our worship, enriched by our strong musical and choral traditions, is at the heart of our community's shared life. The gospel calls us to lives of discipleship, informed by reflection and marked by care for one another, by a passion for justice, and by a commitment to the service of our local and wider community.

Contents

- Foreword - 4
- From the Editor's Chair - 7
- Eco Church: Net Zero Open meeting - 10
- Christian Aid Week - 12
- Parish Boundary Walk -13
- Peter Lowe's Charity Bike Ride – 14
- Young People's Pages - 16
- Church Calendar - 18
- Parish Registers - 19
- Restaurant Review: Nonnas – 21
- 36th St John's (Ranmoor) Scout Group - 24
- Poem by Ann Bird - 25
- Rambling On - 26
- Quiz – 30
- Contacts - 31
- Groups and Activities - 32
- Contributing to Inspire - 34

Cover photograph by Philip Walshaw

Large print versions of Inspire are available

Foreword



This month, creation comes alive, resounding with the message of Easter. Holy Week runs from Palm Sunday on 2nd April, when we will experience the whole Passion narrative, to Easter Sunday on the 9th when we can experience the full glory of the resurrection. During this week we will journey with some of the women of Jesus' time using Paula Gooder's Book, *The Women of Holy Week*. Further details of Holy Week services can be found elsewhere in Inspire.

On Easter Day itself, we hope to have new vestments to further enhance the beauty of our church. These are in the seasonal colour of white and the weave of the fabric incorporates the white rose of Yorkshire. The vestments have been purchased to mark the Coronation of His Majesty King Charles III which takes place on 6th May. Between Easter and the Coronation, we have been asked to pray for the King and for the renewal of our national life at this time of change and new beginnings.

St John's will be marking the Coronation with special services on 7th May. We are having a shared lunch that day as part of the national Big Coronation Lunch initiative and all are very welcome. Monday 8th is a Bank Holiday but we are encouraged to take part in the Big Coronation Help Out by volunteering in some way. Some of us will be participating in the monthly litter pick which starts at 10am opposite Nether Green School.

Later next month on 14th May, St John's will be holding its Annual Parochial Church Meeting after the 10.30am service. Please make sure

that you are on the electoral roll and try to be at this important meeting. Please also consider standing for the PCC. We are always looking for new people with fresh ideas and enthusiasms. It is important that we constantly renew the life of the church as well as our nation and the natural world.

14th May also marks the beginning of Christian Aid Week when we think about our brothers and sisters in some of the poorest parts of the world. After the APCM there will be a picnic and (sponsored) walk around the parish boundary also known as *Beating the Bounds*. As well as being good exercise, I hope the walk will help us to think about and pray for Ranmoor. If you cannot join the walk, do look out for the walkers if they come your way and give them a wave.

There are many signs of renewal and hope in the coming weeks. Whatever your situation and whatever you find yourself doing, I hope that you will know the renewing power of the risen Lord Jesus.

Matthew



St John's Church, Ranmoor

**Come and help make the
Easter Garden and have
fun with our Messy
Church for EASTER!**

Saturday 8th April
2-4pm
on the church lawn

www.stjohnsranmoor.org.uk

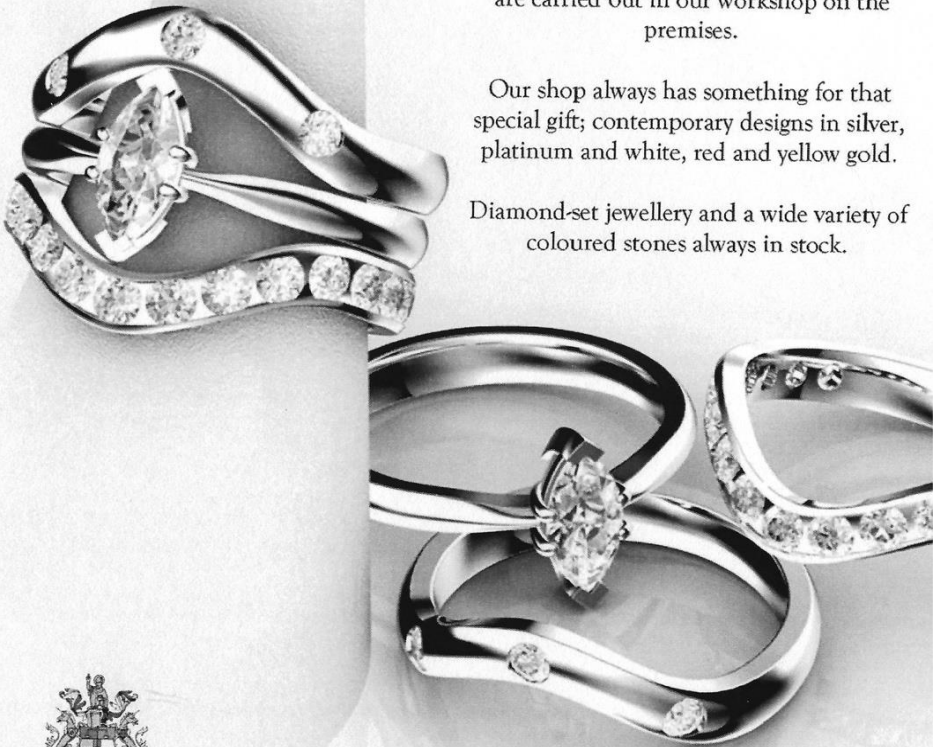
McAvoy & Beardsmore

Jewellers & Goldsmiths

From simple repairs to bespoke pieces, using traditional techniques and the latest Computer-Aided Design software, all tasks are carried out in our workshop on the premises.

Our shop always has something for that special gift; contemporary designs in silver, platinum and white, red and yellow gold.

Diamond-set jewellery and a wide variety of coloured stones always in stock.



A Member of
The National Association
of Goldsmiths

Tel: 0114 230 7078
210 Oakbrook Road, Nether Green, Sheffield S11 7ED
www.mcavoy-and-beardsmore.co.uk

From the Editor's Chair



By the time you read this, you may have been the subject of an April Fools' Day prank. I don't like making a fool of myself - well, who does? - and I generally manage to avoid it, always remembering Abraham Lincoln's advice that it is better to remain silent and be thought a fool than to speak and to remove all doubt. But would it be foolish to admit not knowing the origin of April Fools' Day?

Some historians speculate that April Fools' Day dates back to 1582, when France switched from the Julian calendar to the Gregorian calendar. In the Julian calendar, the new year began with the Spring Equinox around 1st April. People who were slow to get the news, or failed to recognise that the start of the New Year had moved to 1st January and continued to celebrate it during the last week of March through to 1st April, became the butt of jokes and hoaxes and were called "April fools". These pranks included having paper fish placed on their backs, referred to as "poisson d'avril" (April fish), said to symbolise a young, easily caught fish and a gullible person.

Earlier than this, a disputed association between 1st April and foolishness can be found in Geoffrey Chaucer's *The Canterbury Tales* (1392). In the "Nun's Priest's Tale", a vain cock *Chauntecleer* is tricked by a fox on "since March began thirty days and two, i.e. 32 days since March began, which is 1st April.

The oldest reference of April Fools can be traced back to the Bible and the book of Genesis. In the story of Noah and the Ark, Noah sent out a dove on the first of April to see if the waters had subsided. When it was clear they hadn't by the return of the dove, it was referred to as a fool's errand. It was thought proper (I don't know by whom or when) "to perpetuate the memory of this deliverance by sending whoever forgot so remarkable a circumstance, to punish

them upon some sleeveless errand (a fool's fruitless endeavour) similar to that ineffectual message upon which the bird was sent by the patriarch."

April 1st was observed in Great Britain by the ancients as a general festival but it took until the beginning of the 18th century before the making of April fools was a common custom. In England, a fool was called a gob, gawby or gobby. The Scots called the custom "hunting the gowk," (cuckoo), and April fools were "April gowks." As we know, the cuckoo lays her eggs in other bird's nests and has no nest of her own. The sound of the cuckoo heralds the beginning of Spring; to be sent to find a cuckoo's nest would be a fool's errand.

I could go on, but all of this sounds like a script for *Call my Bluff* or *Would I Lie to You?* More recently, people have gone to great lengths to create elaborate April Fools' Day hoaxes. Newspapers, radio and TV stations and websites have participated in the tradition by reporting outrageous fictional claims that have fooled their audiences. And we should not ignore the classic April Fools' prank of covering the toilet seat with clingfilm or switching sugar and salt pots!

Philip Walshaw



Advertise in St John's Ranmoor monthly magazine—Inspire

Have you considered advertising in Inspire the St John's Ranmoor magazine?

Inspire is an A5 size publication published 10 times each year read widely in our local area. Over 300 copies are distributed monthly around the Ranmoor Parish and beyond and the magazine is emailed to over 500 people per month!

Advertising spaces can be quarter, half or full page. Discount for Parish Centre Users.

If you start part way through the year the rate would be reduced pro rata.

For further details please contact Peter Marrison

wpmarrison@btinternet.com or on 07581 888068.

www.stjohnsranmoor.org.uk

EADON LOCKWOOD & RIDDLE

ESTD 1840



New Year, New Home?

Are you living in *S10* or *S11* and want to sell your home? Perhaps you want to let out your property? Or maybe you're looking for your next forever home?

Our negotiators and valuation experts have a wealth of local knowledge in these areas, and alongside our traditional values and excellent customer service - we're the agent for you!

Did you know that we have been awarded the Gold Award in the Best Estate Agent Guide 2023!

Approximately 25,000 estate and letting agencies have been assessed on their marketing, results and customer service in order to differentiate the best agencies in the UK.

Only 5% estate and letting agencies in the UK have been awarded the 'EXCEPTIONAL' status (that's us!). So why not call one of our branches now to speak to a member of our team?



SHEFFIELD

0114 268 3388
sheffield@elr.co.uk

BAKEWELL

01629 700699
bakewell@elr.co.uk

ROTHERHAM

01709 917676
wickersley@elr.co.uk

HATHERSAGE

01433 651888
hathersage@elr.co.uk

LETTINGS

0114 268 9900
lettings@elr.co.uk



Net Zero Open Meeting,
Doncaster
2nd February 2023

I attended the recent meeting at St Peter's, Warmsworth on how churches can work toward achieving net zero CO₂ emissions by 2030. It was a lively event, very well led by Bishop Sophie. It was sobering to be reminded of the global cost of climate change with that cost unfairly and disproportionately borne by the world's poorest. It was also moving and motivating to be reminded that there is a missional call on us at St Johns to act to reduce our carbon emissions, to take part as an act of justice in a church-wide metanoia, a transformative change of heart.

The consequences of global warming are a challenge we all face and each of us, individually and as a church community, can do our bit to reduce carbon emissions. St Johns eco group are already very ably taking actions to change some things we do, introducing initiatives including achieving the A Rocha silver eco award.

My particular interest in attending was to learn how the Church of England's target may be designed-in to our Inspire Ranmoor building project and I came away enthused by the prospect that we could, in transforming St Johns building, show leadership in Sheffield, demonstrate our care for the Creation, and make our project an exemplar of carbon emission reduction and good eco design.

As part of its brief, St John's building project group, with our architect, will seek to identify the barriers we face in improving the energy efficiency of the church building, one which is probably currently one of the biggest, energy-leakiest, most technically challenging buildings in Sheffield. It must be part of our mission to tackle these barriers and if we can do it, anybody can.

Examples of what we'll be looking at include more pro-active maintenance to control damp in the structure, bigger capacity rainwater goods, led lighting, a more efficient heating system, hydrogen-ready boilers and/or heat pumps for when the present boilers wear out, underfloor insulation and solar harvesting,

Interestingly we were told that the Church of England is currently watching for the outcome of two planning inquiries and decisions on the installation of solar panels on 1. "a very well-known and substantial church building in the North of England" (?) and 2. Kings College Chapel, Cambridge. If either of these get the green light, then who knows what lies ahead for St Johns!

Peter Lowe

CE APPROVED

**Now only
£895***
for a fully fitted electric garage door.

WAS £1,354 INCLUDING VAT.

Gotta get a Garolla.

Trustpilot
4.8 out of 5 | Over 2,000 reviews

Garolla garage doors are expertly made to measure in our own UK factories, they're strong and solidly built. The electric Garolla door rolls up vertically, taking up only 8 inches inside your garage, maximising valuable space. Our experienced installers will fit your new door and they'll take away the old one too, so there's no mess.

Give us a call today and we'll come and measure up **FREE** of charge.

GAROLLA
ROLLER SHUTTER DOORS

www.garolla.co.uk

CALL US TODAY ON:
0114 345 0126
MOBILE:
07537 149 128

LINES OPEN 7 DAYS A WEEK

*Offer valid for openings up to 2.6m wide & including 2 remote controls, 55mm white slats, internal manual override.



Christian Aid Week 14th – 21st May, 2023

As Christian Aid Week approaches, we have received updated news about the situation in Malawi, where climate change has brought devastating drought. There are soaring costs of food and essentials, keeping people in desperate poverty. Children are robbed of the chance to go to school when their families can't pay the fees. However, for some there is hope in the shape of the humble, but mighty, pigeon pea – a drought resistant soil-revitalising, high protein delicious crop. Esther Saizi is one who has been supported by Christian Aid. She joined her local pigeon pea programme run by a Christian Aid partner, Nandolo Farmers Association, and through them she is able to obtain a fair price for her crops. With her peas, Esther supports her daughter and sends her grandchildren to nursery. Christian Aid week funds will in part be used to fund the development of this work.

But there is still more to do. Another strong woman in Malawi, Jen Bishop has difficult choices to make. She would love her two boys to be educated. They are both hard working lads and have earned places at top colleges. But Jen cannot afford to send them both. No mum should have the heart-breaking choice of which child to educate and which one will miss out on their dreams. This Christian Aid Week we can help dreams come true. Our gifts, prayers and actions, can help farmers like Jen plant better seeds, secure a fairer price for their crops and build happier futures for their children.

Please support our collections and the following events:-

Peter Lowe's Charity Bike Ride: starting in mid-April, for Alzheimer's Research and Christian Aid – see separate article.

The Round the Parish Sponsored Walk: Beat the Bounds on Sunday May 14th (organised by Alan and Pauline Heath – see separate article),

A Concert of Talents on Friday 19th May at 7pm.

A Big Breakfast/Brunch on Saturday 20th May from 10am to 1pm with stalls for plants, cakes, hand-made cards, preserves, and books.

Bring friends, tell others, and take the opportunity to spread the news!

Janet and Malcolm Anker



Parish Boundary Walk
Organised by Pauline and Alan Heath

There will be a walk around the parish boundary following the APCM on May 14th. This is the start of Christian Aid Week and is also Rogation Sunday when it is traditional to 'Beat the Bounds'. The walk will be led by Pauline and Alan Heath, with a distance of between approximately five & a half and six miles (9km/9.64km) depending on the route taken. It is not practical to precisely follow the boundary as it does not always follow roads and paths but in places crosses gardens etc., however our route follows the boundary as closely as possible.

We intend starting from the church at approximately 1:30 following the meeting and a picnic lunch. We will first walk along Fulwood Road until we reach the boundary at the gennel adjacent to Shore Lane which takes us up to Manchester Road, from there the route goes past King Edward's Upper School, along Tetney Rd, Whitworth Rd, Ivy Park Rd and Carsick Hill Rd to Coldwell Lane.

There are several options from there, ranging from following the complete boundary along Manchester Rd and up a very steep and rough path, to going along Moorbank Rd and Burnt Stones Drive using paved paths. We intend giving everyone a choice at this point, with Alan leading the most adventurous participants and Pauline staying with the sensible ones!

We will then meet up across Hallamshire Golf Course and from there

go down Pitchford Lane and Tom Lane to Nether Green, across to Hangingwater Rd, past the allotments to Bingham Park and finish with a climb up Oakbrook Rd, Riverdale Rd, Endcliffe Vale Rd and finally Woodvale Rd.

We would like participants to raise some sponsorship for Christian Aid, but if you are not able to do so please still come along and discover the full extent of the parish. If you are not able to join us on this occasion there will also be maps of the route available for anyone who would like to do the walk on their own.



I will be starting from Land's End in mid-April and cycling solo to John o'Groats via England, Wales, Scottish west coast, Kintyre and the length of the Outer Hebrides at no particular pace but rather via as many back roads as I can find so as to take in the beauty of our country, to meet lovely people and to find out if I can repeat my first End to End cycle ride back in 2010 when I was 62 years' old. This route will be at least 1000 miles, probably more.

It'll be a joy if I can do it and with the added privilege for me of keeping faith with the wonderful supporters who are sponsoring me in aid of Alzheimer's Research and Christian Aid. If anyone reading this wishes to donate to my chosen charities then please visit:

www.justgiving.com/page/peter-lowe-1678654076163 to give to Alzheimer's research, or
www.justgiving.com/page/peter-lowe-1678656114328 to give to Christian Aid

Thank you very much,
Peter Lowe

Fast and honest quotations for...

Quality Windows, Doors, Porches,
Conservatories, Orangeries, Stained
Glass, Fascias, Soffits & Guttering



...from Sheffield Window Centre - the leading local company

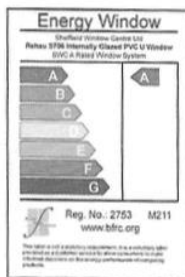
If you're thinking about getting a quote but don't want any sales pressure, look no further than Sheffield Window Centre

- No Pressure Sales - We quote in writing, by post, after a brief visit and never use pressure to sell our products - we wait for you to decide.
- Save money on your heating bills by installing our energy efficient windows.
- We are a reputable family business, established in 1975.
- SWC manufacture virtually everything we install here in Sheffield.
- All of our installations are guaranteed for 10 years.
- During installation our fitters clean up thoroughly at the end of each day.
- 70% of our new business is from customer recommendations.

For a FREE, No Obligation Quotation call us on

0114 281 3333

And remember... Sheffield Window Centre operates a
COMPLETELY pressure free service, so give us a try!



Call us on: **0114 281 3333**

www.sheffield-window-centre.co.uk



Showrooms at: 7 Rockingham Street, Sheffield, S1 4EA & 216/218 Oakbrook Road, Sheffield, S11 7ED

Young People's Pages

Episode 36 of the Adventures of the Elephant and Mouse:



"Do you know what my greatest wish is?" asked the elephant one afternoon. "Go on," said the mouse. "For someone to ask me to dance." "That's your greatest wish? Why?"

"No one ever wants to," the elephant sighed. "I think people are scared I'll step on their toes."

"Would you?" asked the mouse.

"Well," the elephant considered this carefully, "not if they moved quickly enough."



@littlepoppypoetry

Easter Word Search

				P	I	E	R	C	E	D	S																		
				I	A	S	L	R	U	R	P																		
				E	C	S	A	S	A	T	K																		
				C	N	E	S	C	I	B	L																		
				E	P	D	W	O	R	N	B																		
				S	N	Q	F	Z	V	I	Y																		
				O	O	S	L	S	O	E	F																		
K	Z	O	U	K	H	J	R	C	Y	J	F	I	N	E	H	Y	K	R	I	E	K	A	U	Q	H	T	R	A	E
D	R	O	B	E	Q	B	T	J	T	O	S	T	D	O	Y	U	V	X	X	C	L	Z	S	E	V	E	I	H	T
E	T	H	R	E	E	D	A	Y	S	S	I	C	L	K	F	I	H	O	V	I	E	J	C	F	A	G	W	A	N
A	P	O	S	T	L	E	S	S	D	E	L	E	O	U	L	G	N	O	I	X	I	F	I	C	U	R	C	N	U
T	N	J	T	N	Y	Q	V	Y	C	P	V	R	T	I	C	R	O	W	N	O	F	T	H	O	R	N	S	T	V
H	I	G	H	P	R	I	E	S	T	H	E	R	F	V	G	J	U	D	A	S	I	S	C	A	R	I	O	T	I
				R	U	V	B	C	Y	L	U																		
				R	S	K	P	S	T	P	C																		
				B	E	T	R	A	Y	A	L																		
				Q	R	T	Q	O	S	E	F																		
				T	D	V	S	N	X	N	G																		
				F	O	R	A	A	H	E	O																		
				N	B	M	I	K	E	R	L																		
				V	O	O	B	I	B	Y	G																		
				R	P	V	I	N	W	C	O																		
				Q	D	R	T	G	V	F	T																		
				D	M	J	J	C	F	O	H																		
				B	L	O	O	D	E	N	A																		
				C	B	X	V	L	S	O	J																		
				I	S	G	P	L	E	M	E																		
				S	R	M	I	T	T	I	S																		
				A	E	A	A	X	S	S	U																		
				T	N	L	V	T	H	Y	S																		
				P	I	G	O	C	R	S	C																		
				P	U	N	E	A	V	R	H																		
				D	E	U	V	L	O	E	R																		
				M	A	L	N	G	S	I	I																		
				T	A	R	A	C	C	D	S																		
				C	I	R	K	M	M	L	T																		
				V	R	Z	Y	N	B	O	Y																		
				R	Y	O	R	E	E	S	G																		
				K	I	C	S	Y	D	S	G																		
				P	N	H	N	S	Q	E	S																		

ANGELS
 APOSTLES
 BETRAYAL
 BLOOD
 CALVARY
 CROSS
 CROWN OF THORNS
 CRUCIFIXION
 DARKNESS
 DEATH
 EARTHQUAKE
 EASTER
 GOLGOTHA
 HIGH PRIEST
 JESUS CHRIST
 JOSEPH
 JUDAS ISCARIOT
 KING
 LAMB

MARY
 NAILS
 PASSOVER
 PIECES OF SILVER
 PIERCED
 PILATE
 RESURRECTION
 ROBE
 ROMANS
 SACRIFICE
 SIMON OF CYRENE
 SOLDIERS
 SON OF GOD
 SPEAR
 STONE
 TEMPLE
 THIEVES
 THREE DAYS
 TOMB

ST JOHN'S CHURCH, RANMOOR

CALENDAR – APRIL 2023

Sunday 2nd April – Palm Sunday

10.30am All Age Communion with reading of the Passion

6.30pm Choral Evensong

Tues 4th and Wed 5th April: 8pm Holy Week Reflection ending with Compline

Wednesday 5th April – 10-12.30pm

Foodbank Collection

Thursday 6th April – 7.30pm Maundy Thursday - Holy Communion with foot washing

Friday 7th April – 12-3pm Good Friday Vigil and Reflections

Saturday 8th April -

2-4pm Easter Garden and Messy Church (Outside)

8pm Lighting of the Easter Fire and Vigil

Sunday 9th April – Easter Sunday

10.30am Parish Communion

No evening service

Sunday 16th April – The 2nd Sunday of Easter

10.30am Parish Communion

6.30pm Choral Evensong

Monday 17th April

7.30pm PCC meeting in the annexe

Wednesday 19th April – 10-12.30pm

Foodbank Collection

Wednesday 19th April – 7.30pm

Discussion Group at the Vicarage

Sunday 23rd April - The 3rd Sunday of Easter and the Anniversary of St John's Dedication

10.30am Parish Communion

6.30pm Choral Evensong

Monday 24th April

7.30pm Sanctuary

Sunday 30th April - The 4th Sunday of Easter

10.30am Choral Matins

6.30pm Parish Communion – Common Worship

Other services during the week:

Holy Communion: Every Wednesday at 11.30am in the side chapel

Choral Evensong: Wednesdays at 5.30pm

Morning Prayer: Monday to Saturday 9am in Church and on ZOOM

Footsteps: A Sunday school children's group that meets during the Sunday morning service.

Children are welcome at all of our services.

Lunch Club: meets every Wednesday in the Parish Centre. All Welcome

Our Sunday Services are always in Church and on YouTube

www.stjohnsranmoor.org.uk 0114 230 1199

administrator@stjohnsranmoor.org.uk

The Parish Office is open Mondays, Tuesdays, and Wednesdays 9.30am-2.30pm

Parish Registers

We thank you for the gift of the lives of those who were baptised here. May your blessing of peace and joy be with them and protect them all of their days:

Penelope Denby Hollis

Please remember those who have died:

John Bridgwater, Hilary Kirkham and Peter Warr

Blessed are those who mourn, for those will be comforted.

Our thoughts and prayers are with all the friends and families of those names listed.



C Paul Fox MPTA MIMIT

Piano Tuning ~ Repairs ~ Quality Used Pianos

35 Storth Park Fulwood Road
SHEFFIELD S10 3QH

ironframe269@gmail.com

www.sheffieldpianotuner.co.uk

Tel: 07889 759265



CAIRN HOME
Residential Care for Elderly People
Telephone **0114 266 1536**

SRSB
Sheffield Royal Society for the Blind

Cairn Home provides high quality permanent residential care and has one room dedicated to respite care.

58 Selborne Road | Crosspool | Sheffield | S10 5ND
For further details please contact the Manager: 0114 266 1536
enquiries@cairnhome.org.uk | www.cairnhome.org.uk
Registered charity number: 1047257

Restaurant Review: The Sportsman, Redmires Road, Sheffield 10



I'm pretty sure I reviewed *The Sportsman* a few years ago - but can't find any trace of it on my lap top. If I have written a review, and you can actually remember reading it, you really need to get out more! On the assumption that even if there is a review floating around somewhere, it's unlikely that whatever I'm hoping to write will bear any resemblance to the previous erudite tome, or anything else for that matter! So on the assumption all is now clear, read on!

Actually, *The Sportsman* is one of my favourite hostelries. The exterior, interior and ambiance has remained virtually unchanged over the years, presenting - almost as a parody - a classic example of the archetype "English Public House in extremis". Sorry about the "extremis" bit, got rather carried away with my flowery rhetoric!

I've just re-read the last two paragraphs and realised that I haven't actually said anything! So moving on:

The Meal

Before drifting seamlessly into the culinary aspects of *The Sportsman*: a brief mention of the owner, landlady and perennial front of house, Jill Hoffman. Jill is one of the superstars of the hostelry business. She welcomes everyone who comes through the door (well almost everyone) knows everyone by name and is a major factor in the obvious popularity of this establishment. The various other members of staff in attendance are also very good. All the regulars are well known, well received, and often treated as friends (can be tricky this last bit – you really have to know your customer!).

So on to the food (and the drink)! Usual format. Couple of friends, table booked for lunch, cars parked outside, quick sprint through the traditional Lodge Moor weather of rain and sleet (there has to be some negatives!) into *The Sportsman's* welcoming atmosphere (see above for all the “flowery” eulogy), pint ordered from the bar (Timothy Taylor's Landlord beer £3.80) drift towards reserved table, with brief pauses to chat with fellow punters en route to pursuing the extensive food menu on a blackboard near the bar.

I think at this stage it should be mentioned that I do have a certain knowledge of this menu on which the items may vary from time to time depending on the whim of the management. The food preparation is actually organised by a family combine who prepare the dishes “in house” and serve all the food from the kitchen (housed in the main house building) as requested. This “family” is probably into its third generation by now, and are still in the process of producing their signature dish - the legendary meat and potato pie – which would probably be the dish requested as a last meal from someone in death row before making himself (or herself) comfortable in the electric chair. A gift at £8.50.

The Meal (part two)

I decided not to order the meat and potato pie as a new dish – Spicy meat balls with spaghetti (£9.50) proved tempting - and was in fact excellent. These somewhat “different” variations which occasionally are added to the more traditional menu format are well worth trying as they always seem to be good - and may never be offered again! Jam roly -poly pudding (£5.50) was also on the menu, another “must have” when available. This type of sweet almost always brings back memories (probably imagined!) of puddings made by mother/grandmother/ school dinners (or whatever) in a long gone age. Bread and butter pudding tends to evoke the same nostalgic memories don't you think? Actually, apple and blackberry crumble does as well -all available on the menu board available at a modest £5.50 each. A cup of filter coffee (£2.85) completed a very enjoyable lunch. The two chums also expressed satisfaction!

Verdict

Pretty obvious really - well obvious if you have actually read any of the above! *The Sportsman* is one of my very favourite hostelries. One of the few local pubs that retains a great atmosphere - and produces meals that really make you want to return for more. Try it!

Roy Stanley

David Booker
Chartered Accountant



An experienced, friendly and reliable accountancy service, specialising in start-ups, small businesses, tax and trusts.

Call **0114 3211835** to arrange a no obligation consultation to see how we can help you to make your finances less taxing!

T: +44 (0)114 3211 835 **M:** +44(0)777 3821 125 **E:** davidbooker.fca@live.co.uk



Can you help save closure of the Scout Group?

Closure is looming ahead for the 36th Sheffield (Ranmoor) Scout group after almost 100 years. The group was first affiliated in March 1927 and has been one of the largest group for many years and at times having a membership of over 120 young people, but is now struggling to keep open due to lack of adult help.

The group until COVID hit had a healthy membership of boys and girls in the Beaver Colony (6 to 8yrs), Cub Scout Section (8 to 10.5 yrs.) the Scout Section (10to 15yrs) and a waiting list of almost the same numbers as in the group. Now, due to the lack of adult help, the Scout Section doesn't meet and the other two sections are struggling. The headquarters of the group is a two-storey building, built for the scouts in the 1960s, on Benty Lane, Crosspool, Sheffield 10.

If you would like to help keep the sections going which have been helping hundreds of young people over the years prepare for good citizenship, please make contact by one of the methods below, or contact one of the leaders by calling into the HQ on the evening they meet. No experience in scouting is necessary; just a willingness to help young people. We all have skills which can be used to help young people develop, and training in specific scouting areas can be provided as required at no cost to helpers. A discussion or meeting at the HQ can be arranged without any obligation to discuss what support you may wish to give.

Please email Michael at michaelfholmes1@gmail.com or phone or text 07802 860556.

Michael Holmes, Group Scout Leader- 36th Scout Group.

Section leaders

Cub Scouts (8 to 10.5 yrs): Mike Thompson mike@ranmoorscouts.com
07801 850856 Meet Tuesday 6.15pm - 7.45pm

Beaver Scouts (6 to 8 yrs) Jo Owens: jooon1983@hotmail.com
07979 382981 Meet Monday 6.00pm - 7.15pm

Unexpected bad weather in March: A Poem by Ann Bird (photo courtesy of Karen Johnson)



*I woke to glimpse the soft flakes of snow slowly descending
on the waiting earth, quickly covering everything in its path.
Precious flowers were soon veiled under a bed of deep snow,
to sleep until their eventual reawakening.
A solitary bird shivered as it searched anxiously for food,
hopping miserably under its precious shelter.
Quickly the roof tops accepted the cold flakes, wrapping themselves
over the tiles like a warm blanket.
Tinselled trees soon began to bend under the weight of the sky's gift.
The only sound was a distant engine spluttering desperately in its
quest to beat Mother Nature.
Again the silence was broken as excited children laughed and
skipped through the ever-deepening drifts.
Sledges began to appear like long lost treasure as the fun began.
Eventually, cold, tired and hungry they drifted away from winter's
cold embrace.
As day turned to night the snow continued on its downward path,
a relentless journey, emptying the sky of its soul.*

Rambling On

with Philip Walshaw

Hands up if you know where Shatton is. I wouldn't be surprised if you don't, because you can travel on the main road from Bamford to Hope without knowing it's there. It is a secluded hamlet which can be reached by crossing a narrow road bridge opposite the Hope Valley Garden Centre at Bamford. Shatton means 'farmstead in the nook of land between streams', which describes this little settlement perfectly as it sits beside the confluence of the River Derwent and River Noe.



This walk starts from just over the narrow road bridge where you can park, if travelling there by car. It can also be reached by bus. Walk up the road, turn right on Noe Lane and aim for the stile at the top. Walk through a couple of fields and descend the steps at the third stile onto Townfield Lane. This is an ancient route which leads to Brough. It was part of a saltway, which ran up Hurst Clough beyond Bamford and formed part of the Roman road from the fort of Navio at Brough over the Long Causeway to Sheffield.

We don't follow this, but turn left down the lane, crossing the ford and then turning right up the hill. Look out for the signpost almost immediately on the left where construction works are being carried out to the adjacent farm. Climb over the stile into a field alongside a large garden with an outdoor pool. Another stile leads you to a quiet country lane, from where you can admire the view across to Win Hill and Bamford Edge (featured on the previous page).



At the end of the lane, go through a gate and follow the wide track, with Millstone Edge on the horizon, until you reach a footpath sign on the left near to some outbuildings. Further up the hill, you can see Offerton Hall,



which is a grade II* listed building dated 1658, with an earlier core that was constructed in the 16th Century and altered as recently as 1957. Follow the path down to the River Derwent and turn left, following the grassy track alongside the river which

eventually comes out at Shatton. (If you want a closer look at Offerton Hall, you can walk up the hill and turn left and then turn left after the Hall down to the river bank and turn left.)



Shortly before the end of the riverside walk, you can see across the river to where the former Marquis of Granby Hotel used to be. I can remember attending Saturday night discos there (many years ago) and catching the last bus home! The hotel was

demolished around the turn of the century for redevelopment which didn't gain planning permission, although a nice stone wall was constructed.

As recently as last year, a proposal to develop the site, which has become an eyesore, into luxury apartments was refused, with planning officers raising concerns over its lack of affordable housing and 'harmful' effect on the character of the area. The path goes uphill for a short distance before dropping down. Cross a small stream and follow the path alongside a field, usually with horses in, back to the starting point in Shatton.

John Heath & Sons

AN INDEPENDENT FAMILY BUSINESS

Sometime.....

You will probably have the responsibility of making funeral arrangements. No one looks forward to this responsibility, but the death of a family member or a friend brings with it an obligation that must be met. These are people who can help you meet this responsibility. We have been helping people combine the different aspects of a funeral service for over one hundred and thirty five years.

**Premises at Earsham Street | Ecclesall Road | Stannington | Meadowhead
Crookes | Ecclesfield | Deepcar | Penistone | Hollinsend | Eckington**

Day or Night (0114) 272 22 22



www.JohnHeath.co.uk

Pre-paid Funeral Plan Service available



By using this advertisement to make families aware of our services, it is inevitable that we reach homes in which there is illness or sorrow. If this is so please accept our sincere apologies.



Ranmoor Organ Recitals 2022-23

6th October

Philip Collin

(St John's, Ranmoor)

2nd February

Derek Grover

(St John's, Ranmoor)

3rd November

Julian Gunn

(St John's, Ranmoor)

2nd March

Peter Siepmann

(St Peter's, Nottingham)

1st December

Peter Heginbotham

(Sheffield)

4th May

The Organists of St John's

Organ Music from Yorkshire

12th January

George Parsons

(St Catherine's, Wakefield)

1st June

Darius Battiwalla

(Leeds City Organist)

All recitals begin at 8pm

*Entry is free with a retiring collection towards the
maintenance of the organ.*

www.stjohnsranmoor.org.uk

Quiz: Musicals

compiled by Philip Walshaw



The answers to the clues below are the titles of Musicals. A prize awaits the person who submits the most correct answers. A bonus point will be awarded for identifying the featured Musical. In the event of a tie, a winner will be chosen by a lucky draw. Send your

entry by email to jpwalshaw@gmail.com or by post to 19 Cairns Road, S10 5NA to reach me by Wednesday, 19th April, 2023.

1. Seasonal procession (6,6)
2. Am inside well-known hotel (8)
3. Rugged frightful performance (5,6,4)
4. Bird follows vehicle (8)
5. Musician reaches the top (7,2,3,4)
6. Taxi rate changed (7)
7. Exclude union (6)
8. Any two pouring a concoction (5,4,5)
9. Best ever entertainer (3,8,7)
10. Small scary boutique (6,4,2,7)
11. Left wing tale (4,4,5)
12. Firm can be good or bad (7)
13. He's on the tip of most people's tongues (10,7,5,5)
14. Some nocturnal accompaniment (1,6,5,5)
15. Chin up, sour ale revitalised (1,6,4)

Answers to March Quiz: 1. Merchant of Venice 2. Merry Wives of Windsor 3. Macbeth 4. Winter's Tale 5. Comedy of Errors 6. Hamlet 7. King Lear 8. Love's Labour's Lost 9. Twelfth Night 10. Titus Andronicus 11. Othello 12. Antony and Cleopatra 13. Romeo and Juliet 14. As you like it 15. Measure for Measure

Entries were received from: Janet and Malcolm Anker, Ann Bird, Ruth Cheshire, Pam and Ian Dall, Ian Downing, Alan and Pauline Heath, Lynn and Steve Lawless, Jackie and Peter Lowe, Monica Moseley, John and Brenda Staniforth, Janet Twigg, Helen Valentine, Paul Walshaw, Barbara and Peter Wozencroft.

The winner was Monica Moseley, who receives an Easter box of chocolates

Contacts at St John the Evangelist, Ranmoor

Vicar: Revd Canon Dr Matthew Rhodes (07754 068391)
matthew.rhodes@stjohnsranmoor.org.uk

Assistant Curates: Alison Wragg (0114 2301199)
alison.wragg@stjohnsranmoor.org.uk
Matt Wood - (0114 230 1199)

Lay minister: Janet Noble (Children's Minister)
0114 2301199 (Church Office)
footsteps@stjohnsranmoor.org.uk

Churchwardens: Mark Gregory and Pauline Heath
churchwardens@stjohnsranmoor.org.uk

Church and Parish

Centre Office: 5 Ranmoor Park Road, Sheffield S10 3GX
Opening Hours: 9.30am-2.30pm (Mon-Wed)

Administrator: Claire Webber (Safeguarding Officer,
Electoral Roll Officer and PCC Secretary)
(0114 2301199)
claire.webber@stjohnsranmoor.org.uk

Finance and Gift Aid

Officer: Mark Dakin (0114 2301199)
finance@stjohnsranmoor.org.uk

Treasurer: David Booker (07773 821125)
treasurer@stjohnsranmoor.org.uk

Safeguarding: safeguarding@stjohnsranmoor.org.uk

Church Groups and Activities

Children and Young People:

Footsteps (for children up to Y6)

Janet Noble
0114 2301199 (Church Office)
footsteps@stjohnsranmoor.org.uk

REACH (for young people Y7 and up)

Revd Canon Dr Matthew Rhodes
07754 068391
matthew.rhodes@stjohnsranmoor.org.uk

Study Group:

Sandra Green
0114 2309180
biblestudy@stjohnsranmoor.org.uk

Flower arranging:

Sandra Green
Jackie Lowe
0114 2303999
flowers@stjohnsranmoor.org.uk

Music:

Philip Collin, Director of Music
philip.collin@stjohnsranmoor.org.uk
or
music@stjohnsranmoor.org.uk
(vacancy)

Prayer and Fellowship:

Bellringers:

Tower Captain

Richard Noble
07834 154637
towercaptain@ranmoorringers.org.uk
Gill Platt Hopkin
secretary@ranmoorringers.org.uk
contact Claire Webber - Parish
Administrator

Secretary

Wednesday Lunch Club

Uniformed organisations

Beavers :

Glenda Glenbrouwer - 0114 230 8691

Cub Scouts:

Jane and Steven Hides - 0114 230 3635

Scouts:

Steven Hides - 0114 230 3635

Rainbows:

ranmoorrainbows@gmail.com

Guides:

ranmoorguides@gmail.com

Brownies:

Jenny Woodhouse -
ranmoorbrownies@gmail.com



Bents Green Nurseries

*Spring is on its way!
Early season bedding-
fruit bushes, trees*

H.T.A. Gift Vouchers Sold and Redeemed

Tel: 230 4101

Well worth a visit



From Ringinglow Road, turn opposite the 'Hammer and Pincers'
up Muskoka Drive, turn 2nd left into Muskoka Avenue to end of cul-de-sac

JMALCOLMWILD Antique & Modern Clock & Watch Repairs

by Fellow of the British Horological
Institute

*Specialist in the repair of
Grandfather, Bracket & Carriage
Clocks
Clocks and parts manufactured*

WANTED:

Mechanical Wristwatches,
Pocket Watches & Clocks
in any condition

12 Norton Green Close,
Sheffield S8 8BP
Telephone: 274 5693



Alyson Nicholson Catering

Cordon Bleu Cook

*Specialising in Dinner Parties,
Cocktail Parties, Buffets
and Family Occasions*

71 Riverdale Road,
Sheffield
S10 3FE

0114 263 0458 · 07721 365 721

Inspire

Contributors	Janet and Malcolm Anker, Ann Bird, Alan and Pauline Heath, Poppy Hollingworth, Peter Lowe, Matthew Rhodes, Roy Stanley and Philip Walshaw.
Editor	Philip Walshaw: 07815 963807 jpwalshaw@gmail.com
Design	Philip Walshaw
Printers	PRINTWORKS Sheffield (www.printworksprint.co.uk)
Advertising	Peter Marrison: 07581 888068 wpmarrison@btinternet.com
Administrator	Claire Webber (0114) 230 1199
Publisher	Parochial Church Council of the Church of St John the Evangelist, Ranmoor, Sheffield

Contributing to Inspire:

As always you should feel free to contribute to the magazine: articles, news, photographs, and anything else that you feel might be suitable. Any contributions received after the date shown below will be considered for publication in the following issue. We cannot guarantee that everything we receive will be published.

The deadline for contributions to the May edition is Wednesday, 19th April, 2023.

Disclaimer:

The views expressed in this magazine are those of the individual contributors and not necessarily shared by the publisher. We reserve the right to amend articles submitted for publication. Articles submitted may be posted on our website unless you specify otherwise. The publisher does not accept any responsibility for goods or services bought from advertisers in this magazine.

Subscriptions:

You can collect or we can deliver Inspire if you live within the local area. We can post Inspire to you; we will make a small additional charge for this to cover the cost of postage. If you would like to subscribe, please send your contact details to the Parish Administrator at the following address: Inspire Subscriptions, Ranmoor Parish Centre, 5 Ranmoor Park Road, S10 3GX. Once we have received your details, we will contact you.



GOOD FRIDAY SERVICE

Friday 7th April
12noon – 3pm

*Reflections, Prayer Stations and
Good Friday Liturgy*

In Church & YouTube
www.stjohnsranmoor.org.uk



EASTER SUNDAY

10.30am Parish Communion

In Church &
Facebook Live
www.stjohnsranmoor.org.uk

FOR THE DAY AND ALL THE DAYS TO COME...



A child arrives....



A marriage begins...



A life ends...

We are here for you.

JUST ASK...

St John's Church, Ranmoor

0114 230 1199

administrator@stjohnsranmoor.org.uk

www.stjohnsranmoor.org.uk

RANMOOR PARISH CENTRE

Newly
Refurbished
Rooms in 2020

Rooms to Hire from as little as £10 per hour.

Discount available for charities, people living in the Parish of St John's, 1/2 and full day hire.

For more information and availability contact:

0114 230 1199 or email: administrator@stjohnsranmoor.org.uk

Ranmoor Parish Centre offers a tranquil location for various types of groups including music and singing, yoga, performing arts, meetings, pre school classes and various other occasions. Located in the leafy Sheffield suburb of Ranmoor, we are less than three miles from both the city centre and the beautiful Peak District National Park. Public transport links to and from the city are excellent. Contact us for more information or to take a tour visit our website. www.stjohnsranmoor.org.uk

Ranmoor Parish Centre,
5 Ranmoor Park Road,
Sheffield, S10 3EX
www.stjohnsranmoor.org.uk

