

CHURCH OF
S. John the Evangelist,
RANMOOR,
SHEFFIELD.



Its HISTORY
and JUBILEE

1879 - 1929.



By the
Rev. Canon J. R. L. NICHOLLS, M.A.,
Vicar.



Messrs. Yates & Henderson, Sheffield,

THE CHURCH OF ST. JOHN THE EVANGELIST, RANMOOR.

CHURCH OF
S. John the Evangelist,
RANMOOR,
SHEFFIELD.



Its HISTORY
and JUBILEE

1879 - 1929.



By the
Rev. Canon J. R. L. NICHOLLS, M.A.,
Vicar,

A Greeting from the Archbishop of York.

I am very grateful for the opportunity to send a few words of greeting to the parish and people of Ranmoor on the occasion of the Jubilee of St. John's Church. I hope this record of its work through the last fifty years will be a source of inspiration and encouragement for the years to come.

(Signed) WILLIAM EBOR :

Feb. 23rd, 1929.

A Foreword by the Bishop of Sheffield.

Fifty years is really a short time in the life of a Church. There are parishes all over the country whose Churches have remained almost unaltered for several hundred years. Ranmoor is not one of these. It has indeed in its short life gone through almost revolutionary changes. It has seen a fine Church destroyed by fire, a still finer one spring from its ashes, and it has already greatly changed its parochial character. It is rapidly passing from being the abode of the wealthy few to that of the less wealthy many. Such changes have to be faced with faith and a patient courage. The catastrophe of 1887 was met exactly as it ought to have been met. Judging from what I know of its Vicar and his people, at the Jubilee of 1929 the change of parochial character will be met with the same cheerful resolution. The parish has always taken a broad view of its duties as a unit in the Diocese and the Church at large. That it may long enjoy the happiness which comes from large-hearted and unselfish generosity is the earnest prayer of its Bishop.

(Signed) LEONARD H. SHEFFIELD.

March 15th, 1929.

CHURCH OF
S. JOHN THE EVANGELIST.
RANMOOR, SHEFFIELD.



Its History and Jubilee—1879—1929.



Within the memory of many still living, Randmoor, as it used to be called—"the edge of the moor," as its name signifies—was a picturesque piece of country on the outskirts of the growing town of Sheffield. A race-course along what is now Fulwood Road attracted the grinders and cutlers of Sheffield; and the grand-stand, of which "Stand House" marks the site, was filled with the best of Sheffield society; while through the woods and along the banks of Porter Brook and Oak Brook the children loved to wander in spring and summer.

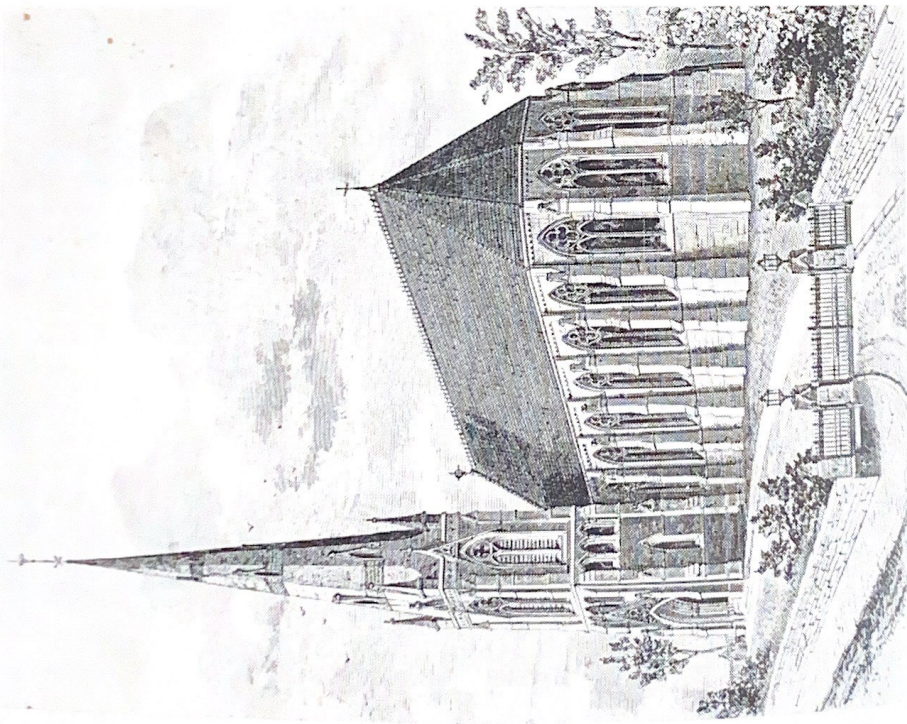
Then came the time of growing prosperity for the cutlery town. The great steel industry sprang almost suddenly into prominence; and steel manufacturers, rapidly acquiring great fortunes, chose Ranmoor for the new mansions they wanted to build. It was within easy reach of the great steel works which now bear the names of "Atlas," "Cyclops," and "Hecla." Half-an-hour's drive in a carriage and pair would take them from Ranmoor to the East End of Sheffield: and so John Brown built "Endcliffe Hall"; and Mark Firth, "Oakbrook"; and John Newton Mappin, "Birchlands"; and Henry Steel, "Tapton Court"; and other big houses rapidly followed—"Tapton Hall," "Tapton Grange," "Tapton Park," "Tapton Cliffe," "Riverdale," "Thornbury," "Rock Mount," "Snaithing Brook," and "Moordale."

It was John Newton Mappin, of Birchlands, who conceived the idea of building, in the midst of these mansions, a House to the glory of God; and by his munificence the Church of St. John the Evangelist was erected. Two sites had each their devotees—one at the corner of Riverdale Road and Fulwood Road; and the other, adjoining Tapton Grange, the house built by J. W. Harrison, who offered a site for the purpose. Eventually, his offer was accepted; and succeeding generations must never cease to be thankful to him for the very beautiful position in which the Church stands.

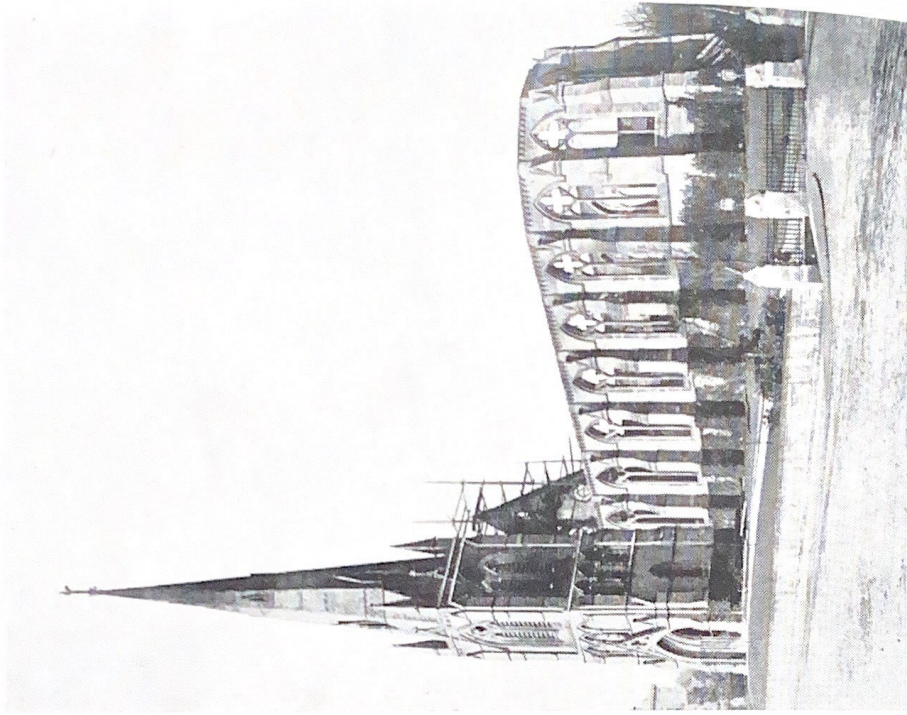
Building operations began in 1877; and there are many still living who remember playing on the ground, and watching the stone-masons at work, as month by month the handsome building, designed by Mr. E. M. Gibbs, rose into shape. The design was Gothic, of the Early English period; the chief feature of the interior being the open-timbered roof, which spanned the whole structure, there being no pillars. The seating accommodation was 560. Gentlemen of the neighbourhood came forward with offers and gifts to furnish the Building—Mr. William Smith, of Hallam Head, gave the peal of eight bells; Mr. J. Y. Cowlshaw, of Tapton Cliffe, the Pulpit; Mr. J. B. Jackson, the Lectern; and Mr. C. H. Firth, of Riverdale, the Organ. On 24th April, 1879, the Church was consecrated by the Most Rev. William Thomson, D.D., Archbishop of York, and was dedicated to St. John the Evangelist. Mr. T. Tallis Trimnell, Mus. Bac., organist of Sheffield Parish Church, presided at the organ, and the Parish Church choir assisted at the service. Among the clergy present on the occasion were the Rev. W. Odom (now honorary Canon of the Cathedral), the Rev. G. W. Turner, and the Rev. T. Couch, all of whom are still amongst us.

To this beautiful Church, Sunday by Sunday, representatives of the great houses resorted. It was the Church of the wealthy; for in those days, with the exception of a few houses built for gardeners, coachmen, and grooms, there were none but big mansions in the parish: and to this "very select" congregation the Rev. Dr. Chalmer ministered. But his ministry was short. He had been incumbent for three years only when he passed away; and in his place the Rev. Archibald George Tweedie was instituted Vicar.

The year 1887, the year of Queen Victoria's Jubilee, came in with the country in the grip of severe frost. It was the evening of New Year's Day; and as the following day was a Sunday, the caretaker of the Church, Thomas Leighton, anxious that the Church should be warm, kept a big fire burning in the stove all night. He was in the Church very early in the morning, and at 8-30 went home for breakfast. Returning at 9-20 he at once detected a smell of smoke, and hurrying into the Church, he found the organ on fire. It transpired later that the cause of this was a beam of wood, too near the boiler flue. Leighton hastened to Ranmoor Inn, and a messenger was despatched on horse-back to Broomhill Police Station, whence a telephone message was sent to the Sheffield Fire Station; but before the fire-engine could be on the spot, the flames had got the mastery, and running up the organ screen, quickly set fire to the roof. Soon the roof fell in, and the Nave was a vast furnace, the flames and smoke from which were seen from the hills of Ecclesall,



Messrs. Yates & Henderson, Sheffield.
FIRST CHURCH BEFORE FIRE



Messrs. Yates & Henderson, Sheffield.
AFTER THE FIRE, JANUARY 1887.

Sharrow, Crookes, and Fulwood. The Tower and Spire, which were somewhat detached from the main block of the building, were saved by the courageous action of Superintendent Pound, who made his way up the spiral staircase to the Belfry, taking a hose-pipe with him. He found that the fire was already creeping through to the Belfry; but from this point of vantage he was able to pour a great volume of water upon the flames, and thus held them in check. But with the exception of the tower and spire, in a very short time the whole Church was burnt to the ground; and the bare walls alone remained standing.

With great courage, vision, and hope, the Vicar and parishioners set to work to erect on the ruins of the old, a still more glorious building; in the meantime holding weekly services in the Parish Hall, which had been built a year before. The Tower was but slightly touched by the fire; and for the rest of the building, apart from the furniture of the Church, £9,400 was recovered from the Alliance Assurance Company, and was paid on the following Monday morning. A further £3,650 was promptly subscribed, building operations were commenced with little delay, the foundation stone being laid by Mrs. C. H. Firth in July, 1887; and on 9th September, 1888, only twenty months after the fire, the restored Church was reopened for public worship. It had been entirely reconstructed according to new designs prepared by Mr. E. M. Gibbs, who by this time was in partnership with Mr. T. J. Flockton; and the following is a somewhat technical description of it. The style of the Church is Gothic, of the "Decorated" period. The principal external features are the apsidal end to the Chancel, the octagonal Baptistry, and the Tower and Spire. The Spire rises to a height of close upon 200 feet, and is the highest in Sheffield. The effect is enhanced by the Tower being partially detached from the Nave. The principal entrance is on the South side, through the Tower, by a lofty arch, which admits to the Narthex; out of which opens, on the left the Baptistry, and on the right arches leading into the Nave and Aisles. A striking feature of the interior is the Triforium, to which access is provided by means of a spiral staircase in one of the main piers of the Nave. The North transept is occupied by the organ; the South transept is a Chapel. The Chancel is of large proportions, with five windows in the apsidal end. The floor is of marble, and the choir stalls of oak. The Church is built of Ancaster Stone, with deeply undercut mouldings, and richly-carved capitols, the work of Mr. Frank Tory. The Reredos, which is also the work of Mr. Tory, is of carved alabaster, in relief, depicting the Last Supper, with figures of St. Peter and St. Paul in the two ends.

In the porch of the Church a Tablet was erected, bearing the

following inscription, "The original Church was erected by the late John Newton Mappin, Esq., of Birchlands, in this parish. Opened, 24th April 1879; destroyed by fire January 2nd 1887. The Church was rebuilt under the supervision of A. G. Tweedie, M.A., Vicar; H. Chalmer and R. Colver, Churchwardens, and re-opened September 9th, 1888. This Tablet was erected by a grateful congregation."

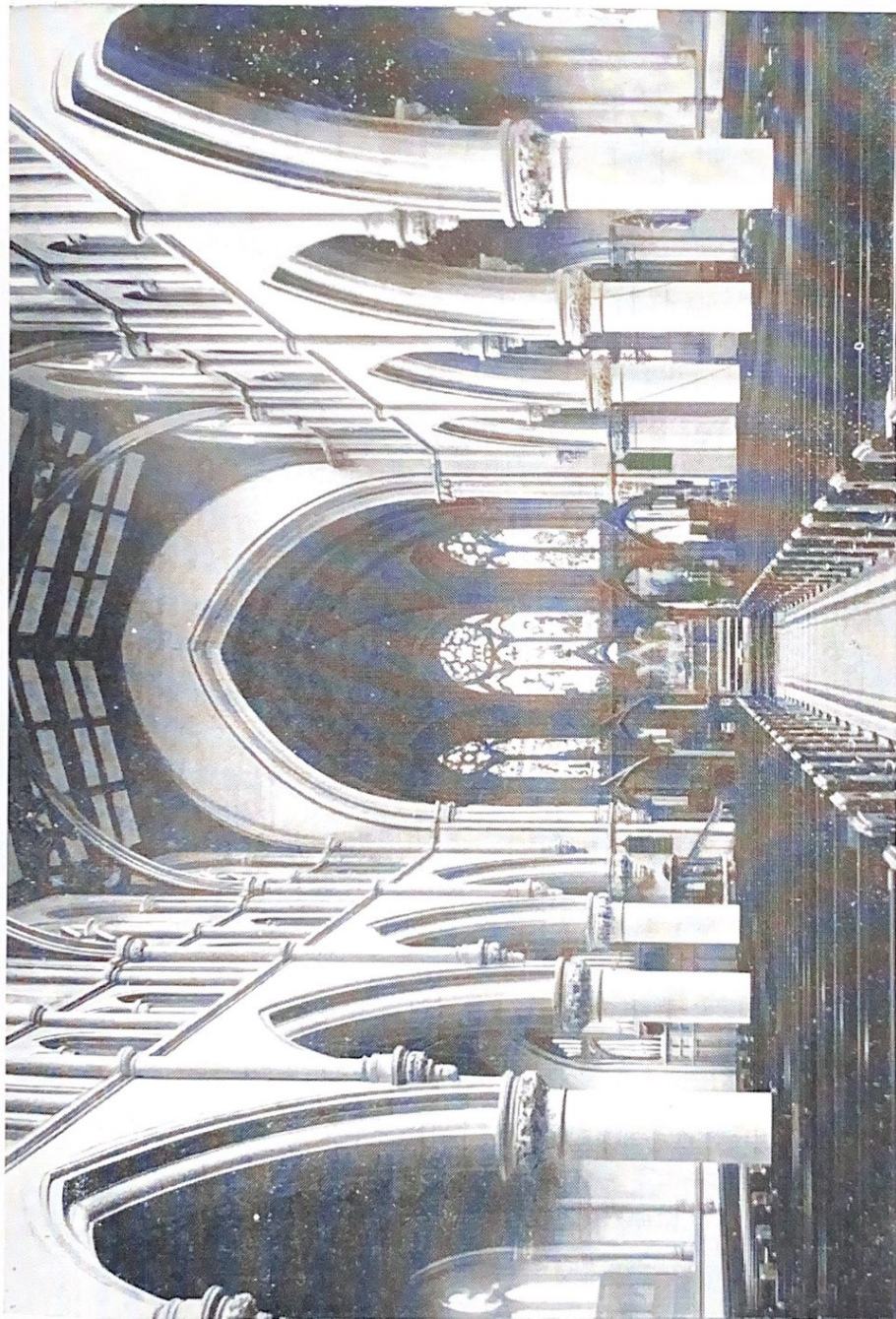
Mr. Tweedie remained as Vicar for only a few months after the re-building of the Church, being appointed Vicar of Selby in 1889. The Rev. J. G. Williams, Vicar of St. Germain's, Isle of Man, was appointed in his place; and during his ministry the Church was beautified by the addition of many stained glass windows; the Chancel screen was erected; and the Vestry enlarged. Mr. Williams was a man of genial disposition, human and humourous in character; and by his personality he continued to draw large congregations to the Morning Service. He died in 1913, and was succeeded by the present Vicar.

During the past fifteen years several beautiful windows have been presented; the South Transept has been furnished as a side-chapel and dedicated by the Bishop of the Diocese to "The Good Shepherd"; a screen has been erected enclosing the Chapel; and the Altar more completely furnished.

Outside the Church itself there has been a marked development in the Social activities of the Parish, consequent upon the enlargement of the Parochial Hall and establishing therein premises for a flourishing Men's Club. While to provide for outdoor recreation for young Church people a field of five acres has been purchased, and facilities provided for Football, Cricket, Hockey, and Lawn Tennis.

For 35 years from the foundation of the Church no change of importance took place in the character of the Parish. Then came the Great War, and following upon it far-reaching changes have occurred. Few of the great mansions along Fulwood Road remain in private occupation: "Endcliffe Hall" is now the Headquarters of the "Hallamshire Rifles"; "Oakbrook" is a Roman Catholic Convent; "Birchlands" is a Private School; "Tapton Cliff" is a University Hostel; "Tapton Grange" is a Home for Orphan Children; "Rock Mount" is a G.F.S. Lodge; while several other large mansions are unoccupied. But other houses of a different character are being built. Sandygate Road and Watt Lane, Cairns Road and Crosspool, are rapidly developing into a populous neighbourhood.

The Church of St. John the Evangelist stands in the heart of the Parish, a glorious heritage from the past, of which every parishioner feels proud. It is the Church of the Parish, in



INTERIOR VIEW EAST.

Messrs. Yates & Henderson, Sheffield.

which every parishioner has the right and privilege to worship ; and with the change in the character of the Parish, there has developed among parishioners a sense of trusteeship and responsibility. One example will serve to illustrate the fact. Seventeen years ago a sum of £800 was raised for necessary Church work—the enlargement of the Vestry and renovation of the Church. Of this £800 all but £50 was contributed by 17 people. To-day more than 200 people are contributing £800 per annum for Church work, through a voluntary offering scheme, and it is anticipated that after the Jubilee even that number will be largely increased.

Prior to the Consecration of the Church a deed was drawn up by the Ecclesiastical Commissioners and signed by the Archbishop of York and the Trustees, authorising the Churchwardens to let sittings in the Church at a specified rent, and to pay the income so derived to the Incumbent as his stipend. This has been the principal source of income of the Benefice ; and parishioners, as represented by the Parochial Church Council, feel that there is no greater service they can render to the Church as a Jubilee thank-offering than to establish an endowment fund with a view to freeing the Church of God from Pew Rents. It may not be possible to accomplish this at once ; but an immediate reduction in the cost of Pew Rents can be effected ; and it is confidently expected that ultimately, by the aid of legacies and otherwise, the Endowment Fund may reach such dimensions that the Pew Rents may be abolished entirely.

The following is an extract of the document (much damaged by fire) executed by the Ecclesiastical Commissioners for England, and William, Archbishop of York, and dated 1st July, 1879. The document sets forth that a grant of money has been made by the said Ecclesiastical Commissioners in aid of the erection of the Church of Saint John the Evangelist at Ranmoor, Sheffield, and it authorises the collection of pew rents according to an attached Schedule. The price of sittings is to be 30/- each per annum ; and the seat rents are to be paid to the Vicar of the Parish in quarterly payments.

Recent communication with the Ecclesiastical Commissioners has elicited the fact that they would be willing to substitute for this deed another, freeing the Church from pew rents, when a sufficiently substantial endowment fund has been raised.

The patronage trustees are Sir ROBERT HADFIELD, Colonel H. K. STEPHENSON, H. B. SANDFORD, Esq., and ROBERT LEADER, Esq.

The Parish is fortunate in possessing a large and loyal band of church workers. There is seldom any difficulty in securing

the requisite number of Sunday School teachers ; and from time to time the Parish has been able to supply teachers for the more populous parishes of the City. The Parochial Church Council has risen to a full sense of its responsibility under the " Parochial Church Council (Powers) Measure." Its Finance Committee, with a lay chairman and a lay honorary secretary, is entirely responsible for the financial affairs of the Parish ; and manages them most satisfactorily. The Social Service Committee has under its supervision the many social activities connected with the Parish Hall and the Church Field. The Registration Committee is responsible for the Electoral Roll, and secures the co-operation of the district visitors whose work is so well done that the Electoral Roll now stands at 1,056—and as all these persons are of 18 years and over, this represents a large proportion of the adult population of the parish, whose total population is less than 4,000. The Missionary Committee seeks to stimulate interest in the work of the Church overseas. The Church is greatly indebted to the officers and members of these committees for the vast amount of time and thought which they give to the work of the Church.

Such is a brief history of the first fifty years of this beautiful Church, probably the most beautiful in Sheffield, where so many local people have been baptized, confirmed, and married, and spiritually enriched by the Ministry of the Word and Sacraments. It is the happy duty and privilege of all Churchpeople loyally to maintain its traditions, to enhance its beauty, to associate themselves with its life and work ; and so to pass on to future generations the blessings which they have themselves received.

In conclusion, the compiler of this handbook desires to express his thanks to all who have helped him with records and recollections of the past ; to the proprietors of the *Sheffield Daily Telegraph* for permission to search their files ; to Mr. ALBERT YATES for the photographs which he has gratuitously and so successfully taken ; and to Mr. H. I. POTTER for much assistance in the technical parts of the letterpress.



CHANCEL.

Messrs. Yates & Henderson, Sheffield



ALTAR.

Messrs. Yates & Henderson, Sheffield

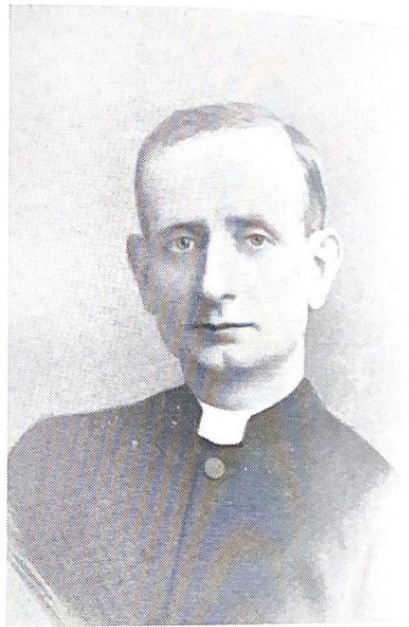
DIARY OF IMPORTANT EVENTS.

- 1879 April 24th, Consecration of St. John's Church by the Archbishop of York. Institution of the Rev. E. B. CHALMER, D.D.
- 1883 Death of the Rev. E. B. CHALMER, and institution of the Rev. A. G. TWEEDIE, M.A.
- 1886 The Parochial Hall was built in Ranmoor Road.
- 1887 Jan. 2nd, Church destroyed by fire.
- 1888 Sept. 9th, Restored Church re-opened.
- 1889 Appointment of the Rev. A. G. TWEEDIE as Vicar of Selby and institution of the Rev. J. G. WILLIAMS.
- 1899 Parochial Mission, conducted by the Rev. Canon J. H. LESTER.
- 1911 Choir Vestry enlarged, and organ renovated and enlarged at a cost of £800.
Oct. 8th, The Archbishop of York dedicated the Chancel screen.
- 1913 Death of the Rev. J. G. WILLIAMS, and institution of the Rev. J. R. L. NICHOLLS, M.A.
- 1914 Installation of electric blower for the organ.
"Hyde House" rented and furnished as a home for Belgian refugees. M. van REETH (Burgomaster of Boom) and family were welcomed as guests.
Sept., Inauguration of the Guild of St. John the Evangelist.
- 1916 Nov. 23-27, National Mission, conducted by the Rev. E. HOPE, M.A.
- 1917 New Carpeting throughout the Church presented by Mrs. E. P. COLVER.
- 1918 The Tower and Spire repointed from top to bottom, at a cost of £230.
- 1919 New heating apparatus installed in the Parish Hall.
Oct. 4th, Primary Visitation of the BISHOP OF SHEFFIELD.

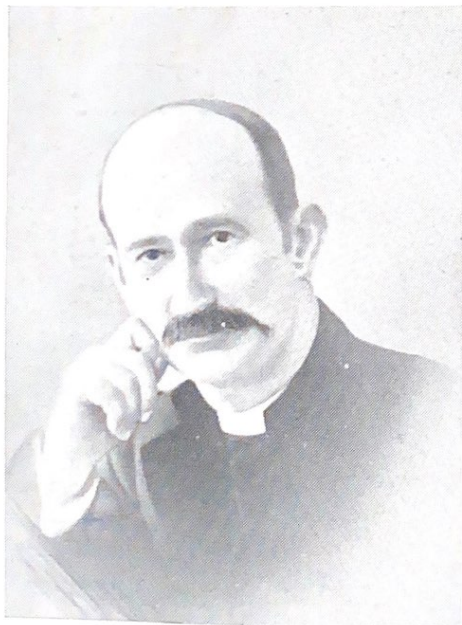
- 1920 Drainage system at Crosspool Day School renovated at a cost of £400.
Dec. 26th, Dedication of "The Chapel of the Good Shepherd."
- 1921 Parish Bazaar held at Tapton Cliffe. Proceeds £616 (net).
War Memorial erected in the Church grounds at a cost of £600, raised entirely by subscription, and dedicated by the BISHOP OF SHEFFIELD.
- A new boiler and electric lighting installed in St. John's Church, and the Priest's vestry enlarged, the Parochial Hall renovated and basement converted into premises for a Men's Club, and electric light installed, at a total cost of £1,700.
Nov., C.E.M.S. Branch started, and Girl Guides' company enrolled.
- 1922 Dec., The Rev. C. COLE-HAMILTON, M.C., Assistant Priest, appointed Vicar of Desborough.
- 1923 Purchase of the Church Field, 5 acres, at a cost of £1,575.
- 1924 "West Lea" presented by Sir ALBERT BINGHAM, Bart., as a Parsonage House. £300, raised by subscription, spent on drainage system, etc., to meet the requirements of Ecclesiastical Commissioners.
Nov., Bazaar held in the Parish Hall. Proceeds £500 (net).
- 1925 Girls' Friendly Society's first meeting.
- 1926 Boy Scouts, St. John's Ranmoor Troop, started.
- 1926 Extensive alterations at the east end of the Parochial Hall at a cost of £300.
Dec., An "Ordination Service" was held in St. John's Church.
- 1927 July, Rev. H. BOYES, Assistant Priest, appointed Priest-in-Charge of St. Polycarp's.
Renovation of the Organ at a cost of £650.
- 1928 Bazaar held in Parochial Hall, in aid of St. Agatha's Hostel. Proceeds £370 (net).



Messrs. Yates & Henderson, Sheffield.
REV. E. B. CHALMER, D.D.,
VICAR, 1879—1883.



Messrs. Yates & Henderson, Sheffield.
REV. A. G. TWEEDIE, M.A.,
VICAR, 1883—1889.



Messrs. Yates & Henderson, Sheffield.
REV. J. G. WILLIAMS, V.D.,
VICAR, 1889—1913



Messrs. Yates & Henderson, Sheffield.
CANON J. R. L. NICHOLLS, M.A.,
PRESENT VICAR.

LIST OF VICARS.

1879 to 1883	EDMUND BOTELER CHALMER, D.D.
1883 to 1889	ARCHIBALD GEORGE TWEEDIE, M.A.Cantab.
1889 to 1913	JAMES GEORGE WILLIAMS, V.D.
1913	JOHN RICHARD LEE NICHOLLS, M.A.Cantab. Honorary Canon of Sheffield Cathedral. Proctor in Convocation.

LIST OF ASSISTANT CURATES.

1879 to 1883	VANIAH ODOM.
1883 to 1884	GEORGE DART.
1884 to 1887	F. J. FULFORD.
1887 to 1888	J. J. DYSON.
1912 to 1913	THOMAS TORRENS.
1914 to 1915	CLAUDE HAROLD STAVELEY, M.A. (now Vicar of All Saints, Sheffield).
1917 to 1918	THOMAS G. HARRIES, M.A. (Part-time).
1920 to 1922	CHARLES COLE-HAMILTON, M.C. (now Vicar of Sholing, Southampton).
1925 to 1927	HARRY BOYES (now Priest in charge of S. Polycarp's, Sheffield).
1928	DAVID THOMAS MORTIMER.

LIST OF CHURCHWARDENS.

1879	JOHN Y. COWLISHAW and HERBERT HUTTON.
1880	JOHN Y. COWLISHAW and WILLIAM HENRY BRITTAIN.
1881	WILLIAM HENRY BRITTAIN and GEORGE H. WATERFALL.
1882, 3, 4	WILLIAM HARMER and ALFRED DEARMAN.
1885, 6, 7, 8	ROBERT COLVER and H. CHALMER.
1889	JOHN WRIGHT and THOMAS FAVELL.
1890, 1	ARTHUR DAVY and THOMAS FAVELL.
1892, 3	ARTHUR DAVY and SIMEON HAYES.
1894	ARTHUR DAVY and SIMEON HAYES.
1895	J. B. WILKINSON and SIMEON HAYES.
1896, 7	J. B. WILKINSON and R. MONTAGUE BROWN.
1898, 9, 1900	J. B. WILKINSON and JAMES DIXON.
1901, 2	J. B. WILKINSON and W. J. BEDFORD.
1903, 4, 5, 6	J. B. WILKINSON and F. M. TINDALL.
1907, 8, 9, 10, 11	J. B. WILKINSON and JOHN MAWHOOD.
1912, 3	J. B. WILKINSON and J. W. MORRISON.
1914, 5, 6, 7	F. M. TINDALL and J. W. MORRISON.
1918-1927	F. M. TINDALL and JOHN MAWHOOD.
1928, 29	JOHN MAWHOOD and GEO. A. PRYOR.

THE PULPIT.

The gift of Mr. J. Y. COWLISHAW in 1888.

Executed in oak, stone, and marble, with carved figures of the four evangelists, each carrying an open book, on the outside of which is carved the emblem of the Evangelist—the face of a man, a lion, an ox, and an eagle. Also, three heads representing Faith, Hope, and Charity. A brass tablet bears the inscription: “This pulpit was the gift of J. Y. Cowlishaw of Tapton Cliffe in this Parish.”

THE LECTERN.

The gift of Mr. and Mrs. C. H. FIRTH, of Riverdale, in 1892.

Executed in brass, and standing on an oak platform.

THE CHANCEL SCREEN.

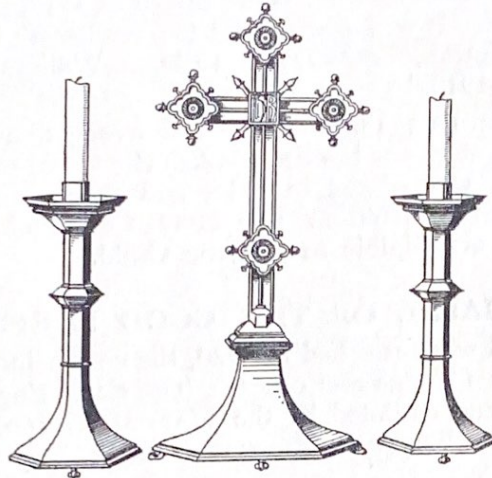
Presented by Sir FRANK MAPPIN, Bart., in 1911, in memory of his father and mother.

Designed by Mr. E. M. GIBBS, and executed by Messrs. TORY & SON.

The “Decorated Gothic” screen consists of five arches, richly carved on both sides, with a cross over the central arch. Six figures stand above the cresting, representing the four Archangels—Michael, with a sword; Gabriel, with lily and scroll; Raphael, with a fish; and Uriel, with a sun on shield—and two angels with trumpet in hand. The carving on the spandrels sets forth a number of Biblical subjects. On the East side, the Annunciation; the meeting of Mary and Elizabeth; the Adoration of the Magi; the Presentation in the Temple; and figures of the Evangelists, the Three Wise Men, St. Peter, and St. Paul. On the West side, figures of Moses, Elijah, Isaiah, Daniel, St. George and the Dragon, Edward the Confessor, with the open Gospel of St. John.

THE ALTAR.

The gift of Lady MAPPIN, in 1911.
Executed in oak, with richly carved front.



The Altar Cross was presented by Mrs. T. W. SORBY in 1916, and is a replica, smaller in size, of the cross designed by Mr. PEARSON, the architect of Truro Cathedral, for use in that Cathedral. It is executed in Latten metal, enriched with four amethysts.

The Altar Candlesticks, also designed by Mr. Pearson, and executed in the same metal, were presented by Mrs. O'SHEA in 1920 in memory of her husband and son.

The gilded oak Riddel Posts were added in 1922, with handsome damask curtains, suitable to the seasons of the Christian Year.

THE COMMUNION VESSELS.



1. The larger set was the gift of Mr. JOHN E. BINGHAM in

1888. Of modern design, the vessels are executed in gilded silver, richly engraved and embossed.

2. The small Chalice, of Early English design, in hammered silver, was presented by Mrs. W. F. SMITH in 1919, in memory of her husband. It was executed by the WARHAM GUILD, and bears the inscription, "A.M.D.G. In Mem. William Frederick Smith. 1861--1918."

During the past three years, the average number of Communicants at Easter has been 542. The Guild of St. John the Evangelist was started in 1914, and meets monthly for instruction and preparation for Holy Communion. All communicants are eligible to join the Guild.

THE CHAPEL OF THE GOOD SHEPHERD.

The Chapel was furnished in 1920, the cost being defrayed by Mr. WILLIAM TOZER and others. The Early English Altar was designed and executed by the WARHAM GUILD, and was dedicated by the BISHOP OF SHEFFIELD on St. Stephen's Day, 1920.

The Oak Screen was presented by Lady MAPPIN in memory of her husband, Sir WILSON MAPPIN, Bart. It was designed by Mr. C. B. FLOCKTON, and was executed by Mr. TORY. The screen is surmounted at the centre by a Cross, on the East side of which are the letters

I C X T N I

which indicate

Jesus ; Christ ; Conqueror.

The "Old Sheffield Plate" Altar Candlesticks were presented by Mrs. SINCLAIR WHITE in 1924, the maker being JOHN PARSONS, and the date about 1790.

Matins and Evensong are said daily throughout the year in the Chapel at 8 a.m. and 5-30 p.m.; and here are also held week-day Celebrations of the Holy Communion.

THE FONT.

The Font in the Baptistry was the gift of the CHILDREN OF THE PARISH at the time of the rebuilding of the Church after the fire. It is executed in stone, and rests on four marble pillars. Round the font are carved four devices—the Ark, a Font, a Dove, and Three Fishes (Emblem of the Holy Trinity). The Font has no cover—in due course, doubtless, this will be presented.

A Sunday School "Baptismal Roll" has recently been started. Parents bringing a child to be baptized are invited to allow their child's name to be placed upon the Baptismal Roll, which hangs up every Sunday in the Sunday School. A birthday



CHAPEL OF THE GOOD SHEPHERD.

Messrs. Yates & Henderson, Sheffield.



THE VICARAGE.

Messrs. Yates & Henderson, Sheffield.

greeting is sent to the child every year until it is five years old, when the greeting is accompanied by an invitation to come to the Sunday School. In this way it is hoped that a constant inflow of new members to our Sunday School will be maintained.

THE PROCESSIONAL CROSS.

Presented by Mr. F. M. TINDALL, in 1924, on the occasion of the marriage of his daughter.

Executed in Latten metal, enriched with jewels, the work of Mr. KEITH, London.

THE ORGAN.

The Organ was built by Messrs. BRINDLEY & FOSTER (now Messrs. Brindley & Co.), of Sheffield. It consists of three manual keyboards, and a pedal board. The swell and choir organs are in separate swell boxes, and tubular pneumatic action is used throughout. A special feature of construction is the introduction of combination pistons which permit of any previously arranged combination to be registered and reserved for future use at the will of the performer. In the Swell organ there are twelve speaking stops; in the Choir organ, ten; in the Great organ, eleven; and in the Pedal organ, ten. There are, in addition, nine coupler draw-stops, nine composition pistons, and fifteen coupler and composition pedals. In all there are 2,562 pipes. The organ case is of oak, handsome in design and open in character. The organ was enlarged in 1911. In 1914 an electric-driven fan was installed in place of the water engine. In 1927 the organ was completely taken down, the bellows-motors (3,000 in number) were renewed throughout; and a new pedal board was introduced, the whole renovation costing £650.

Music has always been a prominent feature of the Services at St. John's Church, the normal strength of the Choir being fourteen men and twenty-four boys. For many years the rendering of Stainer's "Cruxifixion" drew large congregations on Good Friday; and more recently, the more difficult, and perhaps more classical "Passion Chorales" by Bach, and the "Passion according to St. Mark," by Wood, have been well rendered.

Organists.

1879 to 1888 Mr. T. B. BRITTAIN (honorary).
1888 to 1917 Mr. J. C. V. STACEY.
1917 to 1920 Mr. W. GRANGER, A.R.C.M., F.I.S.C.
1920 to Mr. A. W. MORRISON, L.R.A.M., A.R.C.M.

THE BELLS.

The Peal of eight bells was the gift of Mr. WILLIAM SMITH, of Hallam Head, in 1879, and cost £800.

In the ringing chamber are memorials to ARTHUR WARD, a ringer who was killed in the war; and to SAM. THOMAS, known throughout the country as one of the most accomplished bell-ringers of his time, and for many years the leader of St. John's company of bell-ringers. The Peal Boards on the walls record a number of notable achievements. Among them is a Board recording a Peal of Grandsire Triples, 5,040 changes, Holt's Ten-part, rung in memory of the signing of the Armistice in 1918. The peal was conducted by Mr. SAM. THOMAS, and one of the ringers was the Vicar of the Parish, the Rev. J. R. L. NICHOLLS. The peal was rung in two hours and fifty-six minutes.

It has been evident for several years that the bells are in great need of attention; but as the cost of renovation approaches £700, this matter, as is so often the case with Church Bells, has had to give place to more imperative demands. It appears as though this in some respects urgent work awaits the munificence of a personal benefactor. The renovation of the bells would add greatly to the attractiveness of the Church.

THE BANNERS.

St. John the Evangelist.

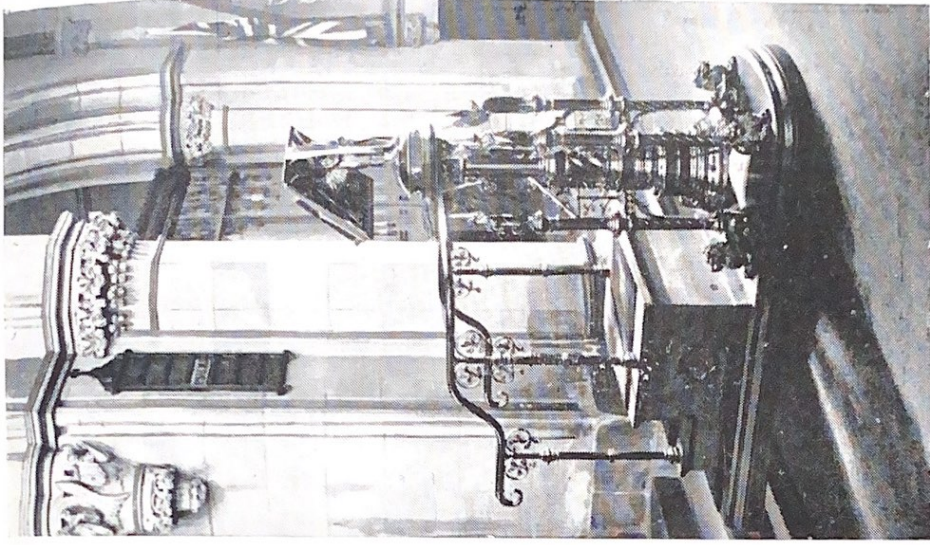
This Banner was presented by the CHILDREN of the Church in 1921. It was designed and executed by the WARHAM GUILD, and represents the figure of St. John the Evangelist on the Isle of Patmos.

Missionary Banner.

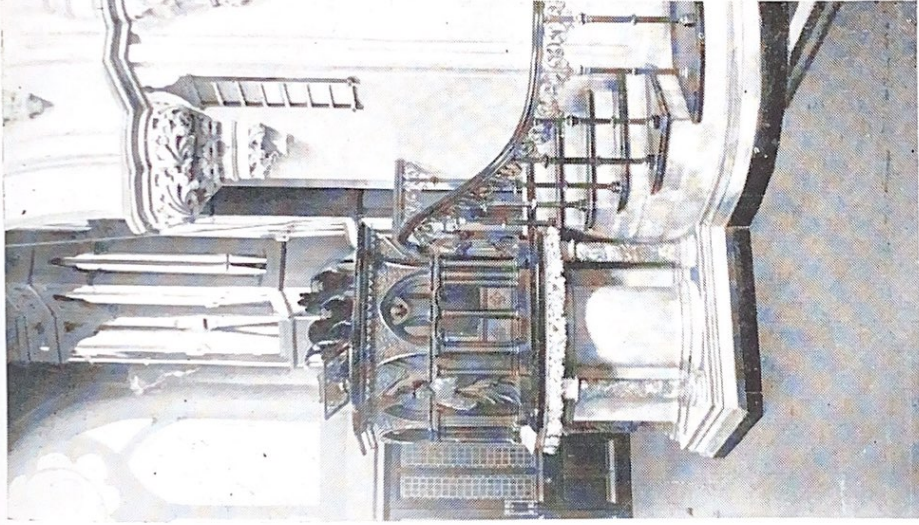
This Banner was made by the CHILDREN of the Sunday School, and the cord and braid were woven by them. It is held monthly by the Class in Sunday School which makes the best contribution to the work of the Church overseas.

Girl Guides' Colours.

The property of St. John's Company of Girl Guides, and is lodged in the Church.



Messrs. Yates & Henderson, Sheffield.
LECTERN.



PULPIT.



FONT.